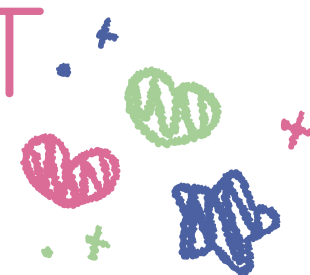




# NAVIGATING SPROUTS:

## CLASSROOM INFO FOR A SMOOTH START.



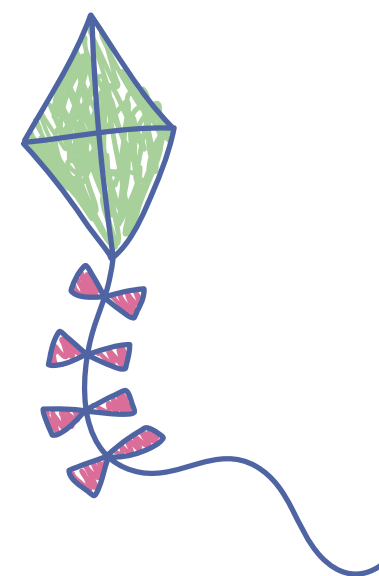
### PURPLE ROOM (INFANT 0-24 MONTHS)

**Drop-off Time:** 7:00 AM



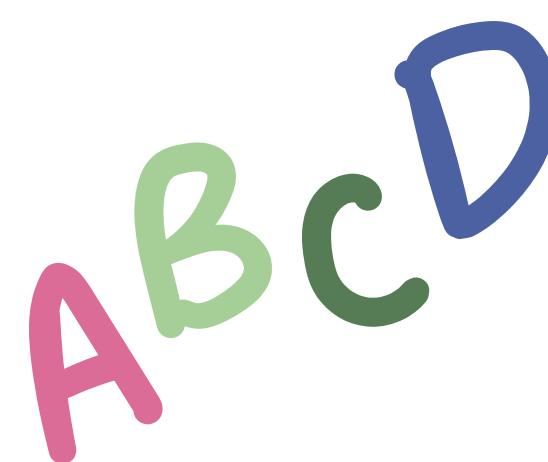
- **Drop-off & Pick-up:**
  - **Located** at Door 6 (west side). Park in the library parking lot and use the doorbell to gain access to the room. This is a shoeless classroom and we ask that carseats are taken with you each day
- **What to Bring:**
  - Bottles and formula/beastmilk
  - Diapers and wipes
  - Spare clothes
  - Medical form required for sunscreen during warmer months.

- **Drop-off & Pick-up:**
  - Located at Door 3 (next to the playground). Park in the alley and enter through the playground gate—ring the doorbell, and a teacher will let you in. If students are on the playground, drop off there.
- **What to Bring:**
  - Water bottle (to stay at Sprouts)
  - Diapers and wipes
  - Spare clothes
  - For diaper cream, a completed medical form and doctor's note are required.
  - Sunscreen application (warm months) also requires a medical form.



### RED ROOM (2- YEAR-OLDS)

**Drop-off Time:** 7:00 AM

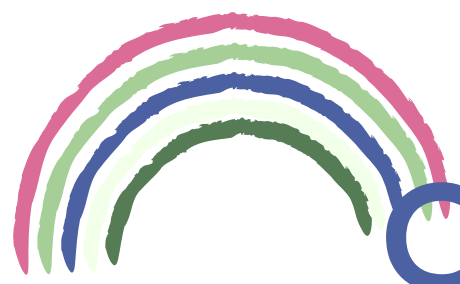


### RAINBOW ROOM (3-YEAR-OLDS)



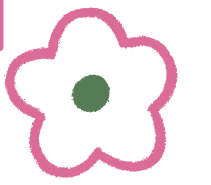
Have an open mind. Accept your strength and weaknesses. Be grateful. Do not be afraid of mistakes.

- **Drop-off & Pick-up:**
  - Use Door 5 (furthest back on the building). Park in the alley and walk back to the door for direct classroom entry. If students are on the playground, drop off there.
- **What to Bring:**
  - Water bottle (to stay at Sprouts)
  - Spare clothes
  - Medical form required for sunscreen in warm months.



# CLASSROOM NEED TO KNOWS

## CLASSROOM INFO FOR A SMOOTH START



### GREEN ROOM - AFTERNOON CARE (AFTER CARLISLE PRESCHOOL)



**Drop-off Time:** Bus will  
drop them off at 11:25. 7:00  
AM on Wednesday



- **Transportation:**

- Parents must arrange transportation from Carlisle Elementary to Sprouts. We follow the elementary school schedule—if there's no preschool, full-day care is available (Wednesdays, snow days, breaks), with an additional fee for full-day care.

- **What to Bring:**

- Water bottle (to stay at Sprouts)
- Spare clothes
- Sunscreen application (warm months) also requires a medical form.

- **Drop-off & Pick-up:**

- Use Door 5 (furthest back on the building). Park in the alley and walk back to the door for direct classroom entry. If students are on the playground, drop off there.

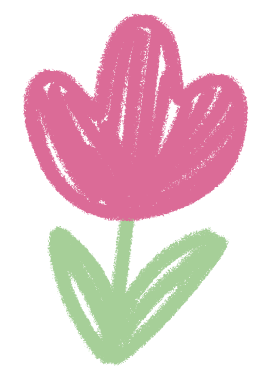
- **What to Bring:**

- Water bottle (to stay at Sprouts)
- Spare clothes
- Medical form required for sunscreen in warm months.

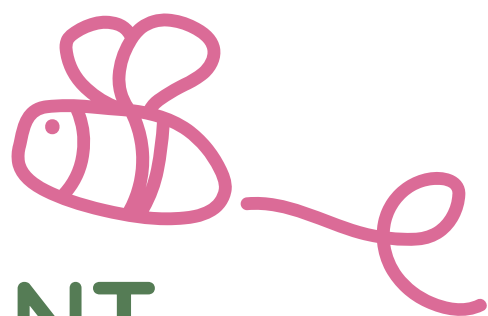
### GREEN ROOM - SUMMER PROGRAM



**Drop-off Time:** 7:00 AM



### IMPORTANT REMINDERS:



- **Medical Forms:**

- Required for anything to be applied to the body (lotions, creams, chapstick, sunscreen, etc.)

- **Full-Day Care Fees:**

- Apply on no-school days and during breaks for Green Room After-school care.